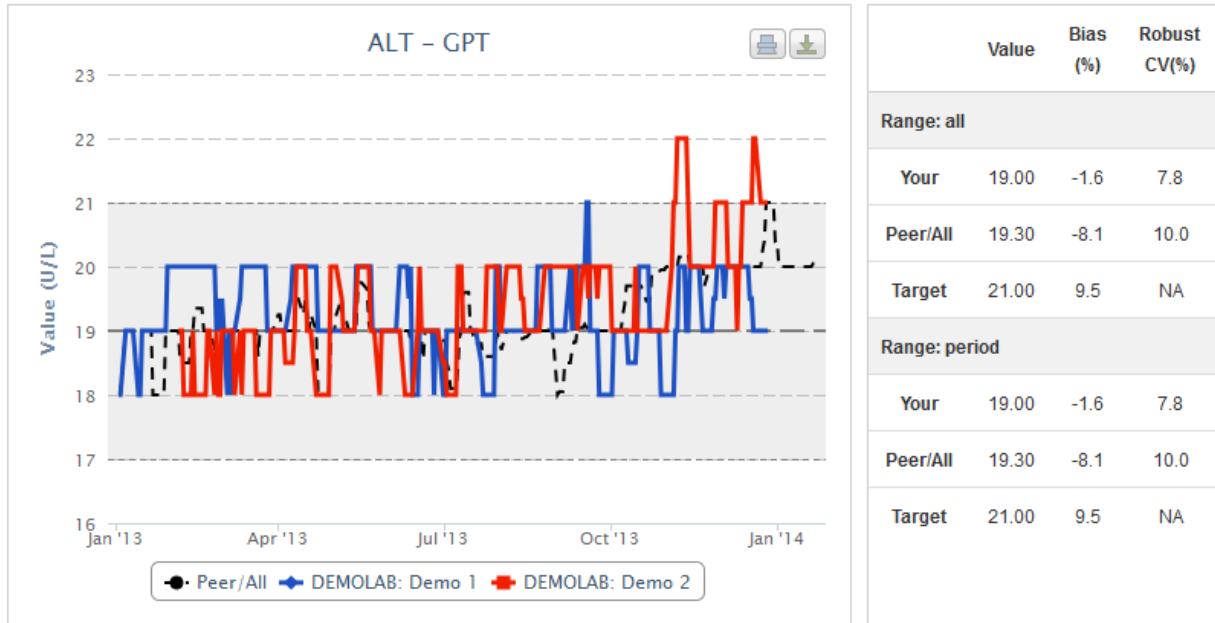


User Guide

The Percentiler



Content

Login

Use

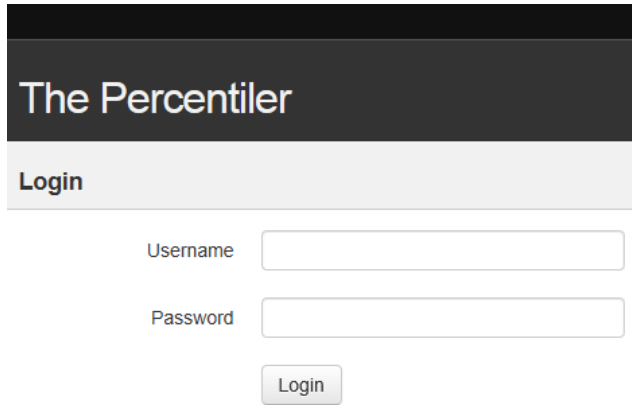
Demonstration laboratory (Demo)

System requirements

Data safety

Login

Internet address: <https://www.thepercentiler.be/>



The Percentiler

Login

Username

Password

Login

Username: not case sensitive

Password: case sensitive

For those who do not yet participate:

Username: DEMOLAB

Password: demo1234

Use

The “Quality” tab

User Properties Logout

The Percentiler
Quality
Samples

Lab

Start date

Range 3M 6M 1Y All

Device model

Stop date

Moving median 5 8 16

Device

Include weekend data

ALT	AST
ALB	ALP
CRP	Ca
CI	CRE
GGT	GLU
PHOS	LDH
Mg	K
Na	UREA
UAC	BIL
CHOL	PROT

	Value	Bias (%)	Robust CV(%)
Range: all			
Your	0.0	0.0	0.0
Peer/All	0.0	0.0	0.0
Target	0.0	0.0	NA
Range: period			
Your	0.0	0.0	0.0
Peer/All	0.0	0.0	0.0
Target	0.0	0.0	NA

Choose your lab (in the “Lab” box)

Only your own lab (or demolab) can be chosen

Lab

Choose the Peer Group (in the “Device model” box)

You can choose either your device or “All device models”

Device model

Choose the device you wish to see for your lab (in the “Device” box)

Default: All devices of your lab are shown

Choose whether to “include weekends”

Default: No

Check either field and also press “Filter” to activate

Include weekend data

 Yes

Choose the data “range”

Default: All

You can also select the range via “Start date”, “Stop date” or via the buttons 3M (months), 6M, 1Y (year), and All

Choose n for the Moving median

Default: 5

Press buttons 5, 8, or 16

Choose the analyte

Press an analyte button

The chart will appear!

The Table will be filled!

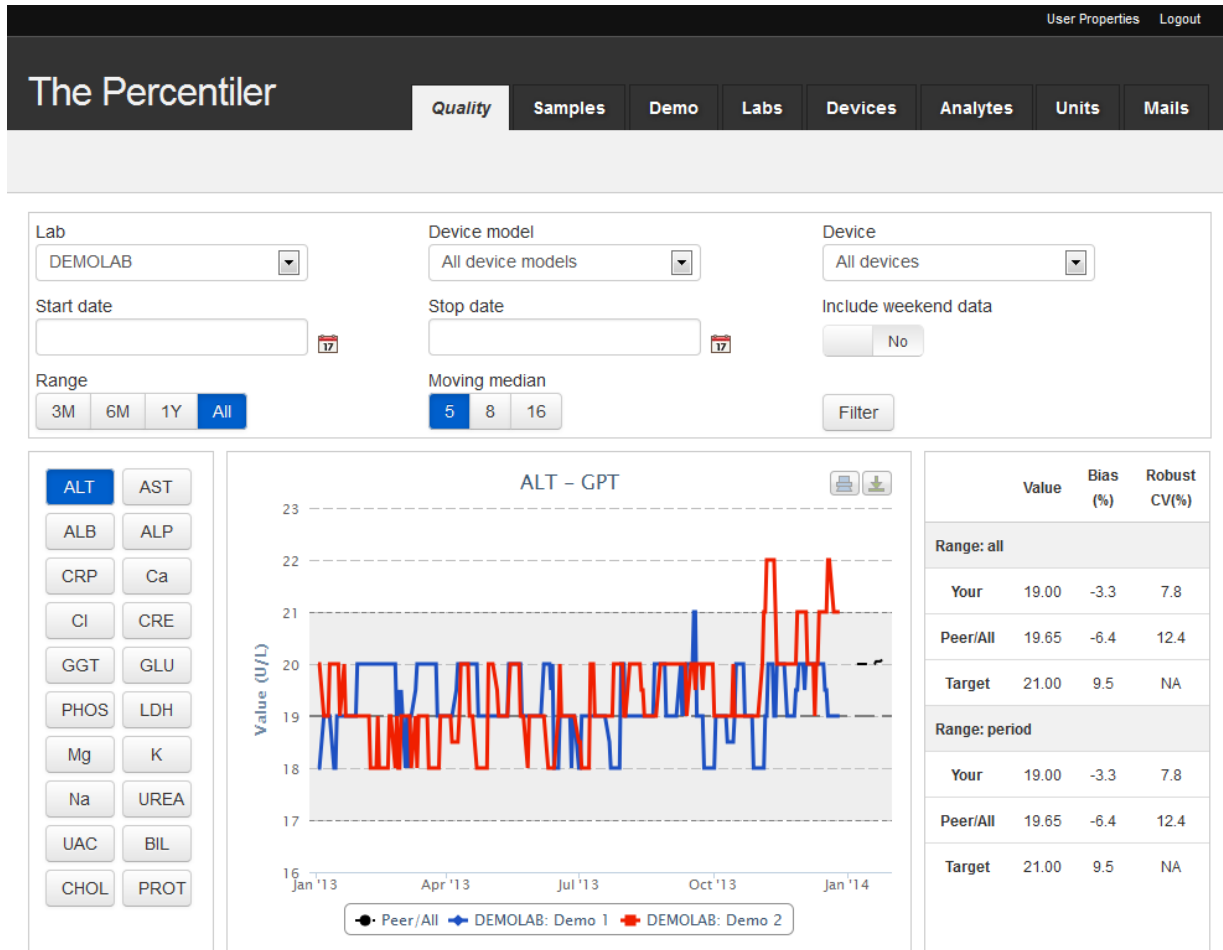
Modify chart

Press the buttons “Range”, “Moving median”, “Analyte”, as you wish.

Demonstration laboratory (Demo)

Note that the data for the demonstration laboratory is only available for the year 2013.

The Chart



The chart shows for the selected lab i) the moving median of the selected devices over the selected period (full colored lines); ii) the long-term median (long-broken grey line) and the limits for the respective analyte (short-broken grey lines; the area in-between is shaded); iii) the Peer Group moving median (black broken line).

Export

You can print and download the chart by pressing the respective buttons.



The Table

Upper part

Refers to the data of the complete period (static when the range is changed)

Lower part

Refers to data of the selected range (dynamic when the range is changed)

The table lists:

“Value”

- Your median
- The Peer/All median
- The Target (fixed value)

“Bias (%)”

- Your bias versus the Peer Group
- The bias of your Peer/All versus the target
- Proposed quality goal/Target for bias

“Robust CV (%)”

- Your Robust CV
- the Robust CV of your Peer /All

Calculation of the robust CV

$$\text{Robust CV} = 100 * (\text{Median absolute difference} * 1.4826) / (\text{median})$$

	Value	Bias (%)	Robust CV(%)
Range: all			
Your	19.00	-1.6	7.8
Peer/All	19.30	-8.1	10.0
Target	21.00	9.5	NA
Range: period			
Your	19.00	-1.6	7.8
Peer/All	19.30	-8.1	10.0
Target	21.00	9.5	NA

The “Samples” tab

Press the tab; the corresponding window appears.

This window shows all entries in the database of **ONLY your lab**. Note, however, that your data are mapped to the “Percentiler” analyte names and units (not necessarily identical to the names and units given/used by yourself).

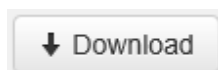
The screenshot shows the 'The Percentiler' application interface. At the top right, there are links for 'User Properties' and 'Logout'. The main title is 'The Percentiler', and there are two tabs: 'Quality' and 'Samples', with 'Samples' being the active tab. Below the tabs is a 'Download' button. The main area contains a filter form with the following fields: 'Analyte' (dropdown), 'Lab' (dropdown), 'Include weekend data' (checkbox, currently 'No'), 'Device model' (dropdown), 'Device' (dropdown), 'Start date' (text input with a calendar icon), 'Stop date' (text input with a calendar icon), and a 'Filter' button. Below the filter form is a pagination control showing '<< < 1 2 3 4 5 6 7 8 9 10 >>' and 'Showing 1 to 20 of 10417'. The table below has the following data:

Id	Date	Value	Analyte	Device	Device model	Vendor	Lab	Code
227821	2013/01/01	139.00	Sodium	Demo 1	Demo	Demo	DEMOLAB	DEMOLAB
235697	2013/01/01	2.39	Calcium	Demo 1	Demo	Demo	DEMOLAB	DEMOLAB
238287	2013/01/01	45.00	Albumin	Demo 2	Demo	Demo	DEMOLAB	DEMOLAB
240842	2013/01/01	68.75	total-Protein	Demo 1	Demo	Demo	DEMOLAB	DEMOLAB
219939	2013/01/01	102.40	Chloride	Demo 2	Demo	Demo	DEMOLAB	DEMOLAB
224802	2013/01/01	76.02546	Creatinine	Demo 2	Demo	Demo	DEMOLAB	DEMOLAB
228186	2013/01/01	139.80	Sodium	Demo 2	Demo	Demo	DEMOLAB	DEMOLAB
236097	2013/01/01	312.2952	Uric acid	Demo 2	Demo	Demo	DEMOLAB	DEMOLAB

You can filter the data (for example, according to analyte, to select in the “Analyte” box, always followed by pressing the “Filter” button) and sort (▲ ▼) (e.g. according to date, value, etc...).

Data export

You can download the data, either completely or filtered.



The format is an EXCEL .csv file. You can easily save it as .xls or .xlsx file.

System requirements

Supported browsers:

Brand	Versions supported
Internet Explorer	6.0 +
Firefox	2.0 +
Chrome	1.0 +
Safari	4.0 +
Opera	9.0 +
iOS (Safari)	3.0 +

Minimum screen resolution

-1024*768

Data-safety

Features:

- Authentication: user and password based access to the application
- Authorization: access roles allowing only users with the appropriate set of permissions to access/use certain functionalities in the application
- Based on spring-security framework, the industry standard for java spring applications
- https security